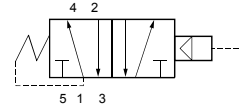


### General information

<b>Lucifer ref.:</b> 541N01	<b>Body:</b> Anod. aluminium body
<b>Global ref.:</b> 7541NAKBJN00	<b>Seat disc:</b> FKM
<b>Housing ref.:</b> -	<b>Ways notation:</b> 3/2 or 5/2
<b>Coil ref.:</b> -	<b>Valve function:</b> 3- or 4-way
<b>Protection class:</b> -	<b>Valve actuation:</b> External pressure supply
<b>Assembly wt. (g):</b> 300	<b>Mounting:</b> NAMUR interface



### Specifications

#### Connection / Orifice

**Port size (inches):** 1/4 - 1/8  
**Nom. dia. (mm):** 4  
**Orifice EXH. (mm):** -

#### Flow factors

**Qn (L/min):** 600  
**Qn EXH. (L/min):** -  
**C (dm<sup>3</sup>/s bar):** -  
**Kv (L/min):** -  
**Kv EXH. (L/min):** -  
**Qmax (L/min):** -

#### Temperature values (°C)

##### a. Fluid temperatures

	Min.	Max.
With air:	-25	80
With water:	-	-
With steam:	-	-
With oil:	-	-

#### Pressure values (Bar)

**Min. pressure:** 2.00  
**Max. press. (DC):** 10.00  
**Max. press. (AC):** 10.00

#### Power values (W)

**Power DC:** -  
**Power AC:** -

##### b. Ambient temperatures

**Minimum:** -25  
**Maximum:** 80

