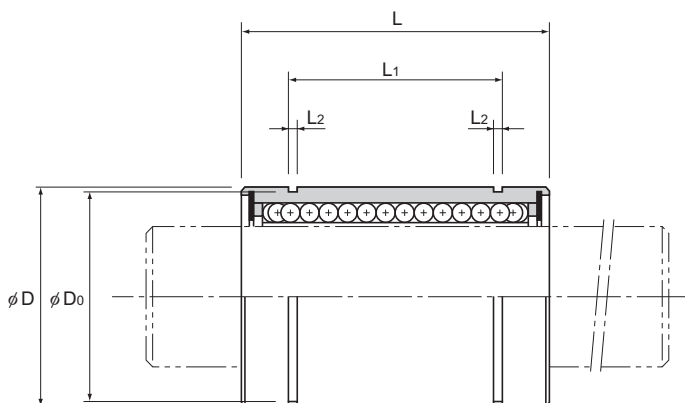


Model LM



Model No.			Ball rows	Main dimensions								
Standard type	Clearance-adjustable type	Open type		Inscribed bore diameter		Outer diameter		Length				
				dr	Tolerance		D	Tolerance High/Precision	L	Tolerance		
LM 3	—	—	4	3	0	0	7	0	10	0		
LM 4	—	—	4	4			-0.008		-0.005		8	12
LM 5	—	—	4	5			10		15			
LM 6	LM 6-AJ	—	4	6	0	0	12	0	19	0		
LM 8S	LM 8S-AJ	—	4	8			15		17			
LM 8	LM 8-AJ	—	4	8			15		24			
LM 10	LM 10-AJ	—	4	10			19		29			
LM 12	LM 12-AJ	—	4	12			21		30			
LM 13	LM 13-AJ	LM 13-OP	4	13			23		32			
LM 16	LM 16-AJ	LM 16-OP	5	16	28	37	0					
LM 20	LM 20-AJ	LM 20-OP	5	20	32	42						
LM 25	LM 25-AJ	LM 25-OP	6	25	40	59						
LM 30	LM 30-AJ	LM 30-OP	6	30	-0.010	-0.007	45	-0.016	64	0		
LM 35	LM 35-AJ	LM 35-OP	6	35	0	0	52	70				
LM 40	LM 40-AJ	LM 40-OP	6	40			60	80				
LM 50	LM 50-AJ	LM 50-OP	6	50			-0.012	-0.008	80		100	
LM 60	LM 60-AJ	LM 60-OP	6	60	0	0	90	-0.022	110			

Notes: Since this model contains a synthetic resin retainer, do not use it at temperature exceeding 80°C.

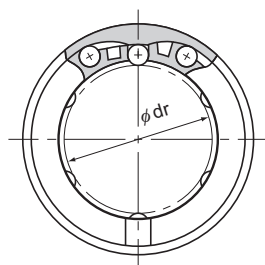
If the ambient temperature exceeds 80°C, use the type equipped with a metal retainer (model LM-GA).

If requiring a type equipped with a seal, indicate it when placing an order.

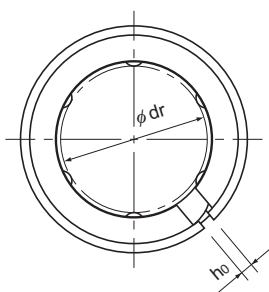
(Example) LM13 UU

U Seal attached on both ends of the nut

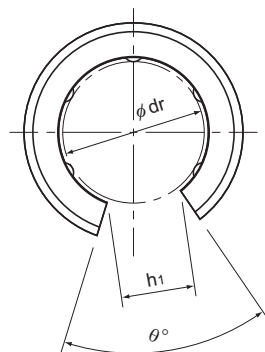
For the clearance-adjustable type (-AJ) and open type (-OP), the inscribed bore diameter tolerance, the outer diameter tolerance, and the eccentricity indicate the values before the division of the nut.



Model LM



Model LM-AJ



Model LM-OP

Unit: mm

	L ₁	Tolerance	L ₂	D ₀	h ₀	h ₁	θ°	Eccentricity (max) μm		Radial clearance tolerance μm	Basic load rating		
								High	Precision		C N	C ₀ N	Mass g
	—	—	—	—	—	—	—	8	4	-2	88.2	108	1.6
	—	—	—	—	—	—	—	8	4	-3	88.2	127	2.2
	10.2	0 -0.2	1.1	9.6	—	—	—	8	4	-3	167	206	4
	13.5		1.1	11.5	1	—	—	12	8	-5	206	265	8
	11.5		1.1	14.3	1	—	—	12	8	-5	176	225	9.3
	17.5		1.1	14.3	1	—	—	12	8	-5	265	402	13.5
	22		1.3	18	1	—	—	12	8	-5	373	549	25
	23		1.3	20	1.5	—	—	12	8	-5	412	598	28
	23		1.3	22	1.5	9	80	12	8	-7	510	775	38
	26.5		1.6	27	1.5	11	60	12	8	-7	775	1180	78
	30.5		1.6	30.5	1.5	11	60	15	10	-9	863	1370	86
	41		1.85	38	2	12	50	15	10	-9	980	1570	210
	44.5	1.85	43	2.5	15	50	15	10	-9	1570	2750	221	
	49.5	2.1	49	2.5	17	50	20	12	-13	1670	3140	358	
	60.5	2.1	57	3	20	50	20	12	-13	2160	4020	557	
	74	2.6	76.5	3	25	50	20	12	-13	3820	7940	1418	
	85	3.15	86.5	3	30	50	25	17	-16	4710	10000	1733	

Notes: When using the Linear Bushing on a single shaft, use two or more units (instead of one unit) on the same shaft to avoid a moment load, and secure a large distance between the units.

If a lubrication hole is required, this can be indicated by appending "OH" to the end of the model number.

For further information, contact THK.